

Quality design



EXEC-200

Bow Fronted Desk

| | | |
|----------------------|---------------------------------|-----------------------------------|
| Model EXEC-180 | Description Bow Fronted Desk | Dimensions W1800 x D900 x H730 |
| Model EXEC-200 | Description Bow Fronted Desk | Dimensions W2000 x D900 x H730 |
| Model EXEC-RCM180 | Description Rectangular Desk | Dimensions W1800 x D900 x H730 |
| Model EXEC-RU | Description Universal Return | Dimensions W900 x D600 x H730 |



EXEC-RU

Tables

| | | |
|----------------------|--------------------------------|------------------------------------|
| Model EXEC-RT120 | Description Circular Table | Dimensions 1200 Diameter |
| Model EXEC-BDT240 | Description Boardroom Table | Dimensions W2400 x D1200 x H730 |



EXEC-RT120



EXEC-BDT240

Elegant curves

Classic design



EXEC-FP



EXEC-2DSF

Pedestals

| | | |
|--------------------|---|----------------------------------|
| Model EXEC-FP | Description Return Unit Fixed 2 Drawer Pedestal | Dimensions W400 x D450 x H300 |
| Model EXEC-2DSF | Description 2 Drawer Side Filing Cabinet | Dimensions W900 x D600 x H730 |
| Model EXEC-MP | Description Full Height 3 Drawer Pedestal | Dimensions W438 x D600 x H680 |



EXEC-MP

Designer cool

Quality design



EXEC-BC/SC18



EXEC-SC730

Storage Cupboards

| Model | Description |
|--------------|--|
| EXEC-SC730 | Cupboard Complete with 1 shelf |
| EXEC-SC12 | Cupboard Complete with 2 shelves |
| EXEC-SC18 | Cupboard Complete with 4 shelves |
| EXEC-BC/SC18 | Combination Cupboard Complete with 3 shelves |



EXEC-SC12

Dimensions
H730 x W800 x D450

Dimensions
H1200 x W800 x D450

Dimensions
H1800 x W800 x D450

Dimensions
H1800 x W800 x D450

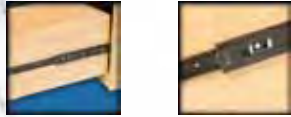


EXEC-SC18

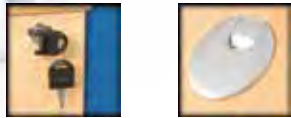
Elegant curves

Quality Products

Standard Features on all MFC products



Easy Ball Glide Runners on all Pedestal Drawers



Two Hinged Keys

80mm Port Holes on Desks



25mm Modesty Panels

All MFC is 25mm thick with 3mm edging



3mm ABS Edging

Silver Metal Handles

All Workstations are FIRA Certified

Test Certificate **FIRA**
Expertise • Independence • Integrity


This certificate confirms that the

RECTANGULAR DESK: RCM100-6 (1000MM)
RECTANGULAR DESK: RCM160 (1600MM)
CRESCENT DESK: RDM180 (1800MM)

has been tested at FIRA International Limited and successfully satisfied the applicable test requirements from:

BS EN 527-2: (2002)
BS EN 527-3: (2003)

Report reference: TSTAF39520 - 22 refer

SIGNATURE  **Mark Goodchild**

POSITION Technical Specialist - Tables & Beds

CERTIFICATE DATE 28 July 2011

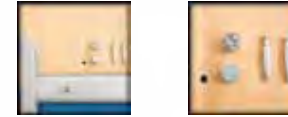
For and on behalf of FIRA INTERNATIONAL LIMITED

FIRA
Expertise • Independence • Integrity

This certificate only relates to the sample(s) supplied and tested at the time. Re-testing at intervals is recommended and should be subject to agreement between the supplier and the purchaser.

FIRA International Ltd Maxwold Road, Stevenage, Hertfordshire SG1 2EW, England.

Standard Features on all MFC products



Metal to Metal Fixings on all MFC Products



Double Strut Cantilever Leg as standard

A4 and Foolscap Filing



Adjustable Feet

Fully Extending Drawers



Solid Box Drawer Filing on Pedestal

Modesty Panel with Cable Access

Quality Assured