

Quality Design



OI-1680/MP
with OI-T3DP
and DMS1640



OI-T3DP



OI-1680/MP

White Freestanding Bench Desking

Model	Description	Dimensions
OI-1280/MP	1200mm White Rectangular Desk with modesty panel	W1200 x D800 x H730
OI-1480/MP	1400mm White Rectangular Desk with modesty panel	W1400 x D800 x H730
OI-1680/MP	1600mm White Rectangular Desk with modesty panel	W1600 x D800 x H730
OI-T3DP	White 3 drawer full height mobile pedestal	W440 x D600 x H645

Boardroom Table

Model	Description	Dimensions
OI-BDT240	Oval Shaped Boardroom Table complete with brushed metal legs	W2400 x D1200 x H730



Elegant Curves

White Reception Desking

Model	Description	Dimensions
OI-NRC2400	White Reception Counter	H1150 x W2400 x D1150



White Storage

Model	Description	Dimensions
OI-SC730	Desk high Double Door Cupboard with 1 shelf	H730 x W800 x D450

Model	Description	Dimensions
OI-SC12	Double Door Cupboard plus 2 shelves	H1200 x W1000 x D450

Model	Description	Dimensions
OI-SC20	Double Door Cupboard plus 5 shelves	H2000 x W1000 x D450



All shelves are fully adjustable

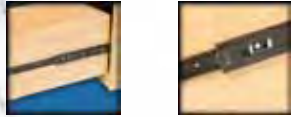


Quality design

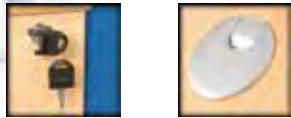
Elegant curves

Quality Products

Standard Features on all MFC products



Easy Ball Glide Runners on all Pedestal Drawers



Two Hinged Keys

80mm Port Holes on Desks



25mm Modesty Panels

All MFC is 25mm thick with 3mm edging



3mm ABS Edging

Silver Metal Handles

All Workstations are FIRA Certified

Test Certificate **FIRA**
Expertise • Independence • Integrity


This certificate confirms that the

RECTANGULAR DESK: RCM100-6 (1000MM)
RECTANGULAR DESK: RCM160 (1600MM)
CRESCENT DESK: RDM180 (1800MM)

has been tested at FIRA International Limited and successfully satisfied the applicable test requirements from:

BS EN 527-2: (2002)
BS EN 527-3: (2003)

Report reference: TSTAF39520 - 22 refer

SIGNATURE  **Mark Goodchild**

POSITION Technical Specialist - Tables & Beds

CERTIFICATE DATE 28 July 2011

For and on behalf of FIRA INTERNATIONAL LIMITED

FIRA
Expertise • Independence • Integrity

This certificate only relates to the sample(s) supplied and tested at the time. Re-testing at intervals is recommended and should be subject to agreement between the supplier and the purchaser.

FIRA International Ltd Maxwold Road, Stevenage, Hertfordshire SG1 2EW, England.

Standard Features on all MFC products



Metal to Metal Fixings on all MFC Products



Double Strut Cantilever Leg as standard

A4 and Foolscap Filing



Adjustable Feet

Fully Extending Drawers



Solid Box Drawer Filing on Pedestal

Modesty Panel with Cable Access

Quality Assured